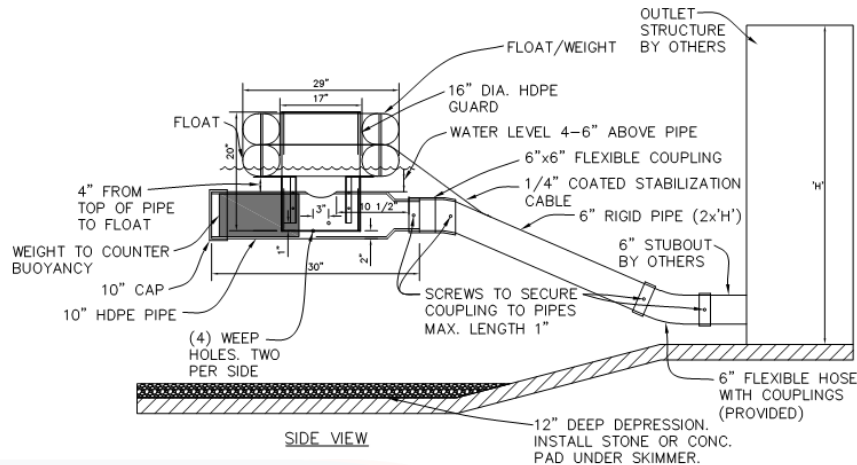




## Model #3 | 5", 6" & 8"

### Marlee Float™ Skimmer Cut Sheet/Installation Instructions



1. Model 3: 5" - 8" Marlee Float Skimmer is to be attached to a 6" rigid pipe (Schedule 40 PVC for construction/temporary applications or HDPE for permanent applications). Rigid pipe should be 1.5 times the height of the outlet structure – minimum of 8'. For ponds requiring a pipe length greater than 14' additional weight may be required to counteract buoyancy.
2. 6" Rigid pipe to be attached to 6" pipe stubbed out of outlet structure or through dam. Flexible pipe with couplings to attach 6" rigid pipe to 6" PVC or HDPE stub out is provided. If stubout is material other than Schedule 40 PVC or HDPE an alternate coupling may be required.
3. When attaching rigid pipe to skimmer coupling make sure to leave at least 1" space in coupling between pipes to allow for sufficient flexibility.
4. Basin should have a 12" depression (skimmer pit) to effectively drain pond. It is preferable to line bottom of skimmer pit with stone, riprap or concrete. Water may remain in bottom of skimmer pit. It is recommended to slope basin at minimum 1% grade to skimmer pit.
5. Skimmer is shipped fully assembled. Top weight can be removed for ease of installation by removing wing nuts. Take care to replace rubber stoppers, washers and tighten wing nuts securely once installed. User attaches flexible couplings to rigid pipe and stubout from outlet structure. Securely tighten pipe clamps and install two screws (provided) through each connection to minimize twisting.
6. During installation take care to position skimmer in upright position with floats level. Also verify that vent hole in flexible coupling is rotated to top of pipe.
7. 5" and 6" Orifice saddle is provided to convert standard 8" orifice. Center hole in saddle over 8" hole and secure using two pipe clamps provided.
8. Install stabilization kit per separate instructions included with kit.
9. Add maintenance rope. Tie to skimmer and affix to outlet structure or post on bank. Insure sufficient rope so skimmer flotation is not restricted.
10. Flow rates are provided with details. Design engineer to select skimmer size as required to meet local requirements. For technical support and/or assistance with installation, visit our website at [www.rymarwaterworks.com](http://www.rymarwaterworks.com) or call 855.697.9333.

803 Roper Creek Drive Greenville, SC 29615

855.697.9333

[www.rymarwaterworks.com](http://www.rymarwaterworks.com)

[info@rymarwaterworks.com](mailto:info@rymarwaterworks.com)