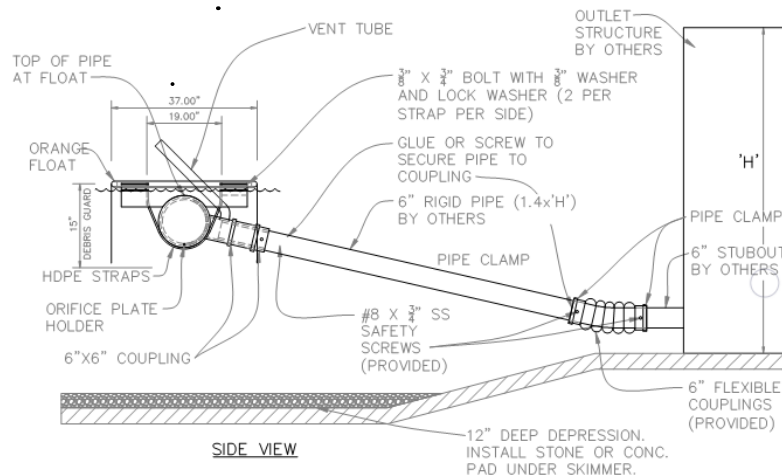




## 6" Marlee Float - 3.5", 4", 4.5", 5" & 6" orifices

### Marlee Float™ Skimmer Cut Sheet/Installation Instructions



- 6" Marlee Float™ Skimmer is to be attached to a 6" rigid pipe (Schedule 40 PVC for temporary applications or UV-Resistant PVC or HDPE for permanent applications). Rigid pipe should be 1.4 times the height of the outlet structure – minimum of 8'. For ponds requiring a pipe length greater than 20' additional weight may be required to counteract buoyancy.
- Place skimmer body, float, 6" rigid pipe and 6" flexible coupling in basin prior to connection. Confirm pipe is 1.4 times height of outlet structure. Cut pipe to length as needed.
- 6" Rigid pipe to be attached to 6" pipe stubbed out of outlet structure or through dam with flexible bellows coupling provided. Install screws through coupling or use PVC glue to reinforce connection.
- Attach rigid pipe to skimmer coupling. Make sure to not leave any space in coupling between pipes to provide solid, fixed connection that will not flex. Install provided screws through coupling to rigid pipe or use PVC glue to reinforce connection.
- Orifice plates come with skimmer. Install correct orifice plate as specified or remove for full size/flow.
- Once orifice size is correct, install provided grate/screen over orifice opening with provided screws.
- Install vent tube provided. Use PVC glue to permanently affix the tube to coupling previously installed. **DO NOT USE VENT TUBE AS HANDLE!**
- Attach float to skimmer body using HDPE strips, bolts and lock washers (provided) - two per side per strap. Insert bolts through holes in HDPE strips and screw into inserts in float.
- Basin should have a 12" depression (skimmer pit) to effectively drain pond. It is preferable to line bottom of skimmer pit with stone, riprap or concrete. Water may remain in bottom of skimmer pit. It is recommended to slope basin at minimum 1% grade to skimmer pit.
- During installation take care to position skimmer in upright position with pipe and float level. Add maintenance rope (not provided). Tie to skimmer and affix to outlet structure or post on bank with enough rope so skimmer is not restricted.
- Flow rates are provided with details. Design engineer to select skimmer size as required to meet local requirements. For technical support and/or assistance with installation, visit our website at [www.Rymarwaterworks.com](http://www.Rymarwaterworks.com) or call 1-855-697-9333.
- If debris guard/skirt needs to be replaced, contact your local distributor to order. Cut zip ties from around tubing and skirt. Install new skirt with provided zip ties around existing tubing. Ensure opening is positioned over outflow pipe.

3620 Pelham Rd PMB #390 Greenville, SC 29615

855.697.9333

[www.rymarwaterworks.com](http://www.rymarwaterworks.com)

[info@rymarwaterworks.com](mailto:info@rymarwaterworks.com)